

Northwest Florida Bed Taxes

	Bay	Escambia	Okaloosa	Santa Rosa	Walton	Northwest Florida
Jun-02	556,390	416,289	616,904	54,062	647,850	2,291,495
Jul-02	681,595	484,364	699,727	126,448	730,547	2,722,680
Aug-02	314,647	294,835	411,984	140,417	428,563	1,590,445
Sep-02	183,532	193,564	237,072	66,755	254,949	935,871
Oct-02	112,384	190,161	166,123	32,516	156,161	657,345
Nov-02	74,734	156,742	71,872	21,077	88,185	412,610
Dec-02	48,033	129,124	71,766	16,862	68,616	334,401
Jan-03	88,001	150,788	95,404	19,230	80,944	434,368
Feb-03	122,200	180,228	142,235	22,950	128,733	596,346
Mar-03	410,435	278,843	245,121	34,225	268,939	1,237,563
Apr-03	323,644	280,195	343,802	48,728	380,718	1,377,087
May-03	325,420	314,877	358,844	54,911	389,168	1,443,220
Jun-03	559,817	461,018	697,263	66,390	743,435	2,527,923
Jul-03	741,028	558,939	794,859	138,378	761,059	2,994,263
Aug-03	345,114	356,367	482,138	149,830	485,713	1,819,163

	Bay	Escambia	Okaloosa	Santa Rosa	Walton	Northwest Florida
Percent Change Aug-02 to Aug-03	9.68%	20.87%	17.03%	6.70%	13.34%	14.38%

	Bay	Escambia	Okaloosa	Santa Rosa	Walton	Northwest Florida
2002 Rolling Quarter	\$1,552,632	\$1,195,487	\$1,728,615	\$320,927	\$1,806,960	\$6,604,621
2003 Rolling Quarter	\$1,645,959	\$1,376,324	\$1,974,261	\$354,598	\$1,990,207	\$7,341,349

	Bay	Escambia	Okaloosa	Santa Rosa	Walton	Northwest Florida
Percent Change Rolling Quarter	6.01%	15.13%	14.21%	10.49%	10.14%	11.15%

Note: Rolling Quarter is the sum of the current month and the last two months

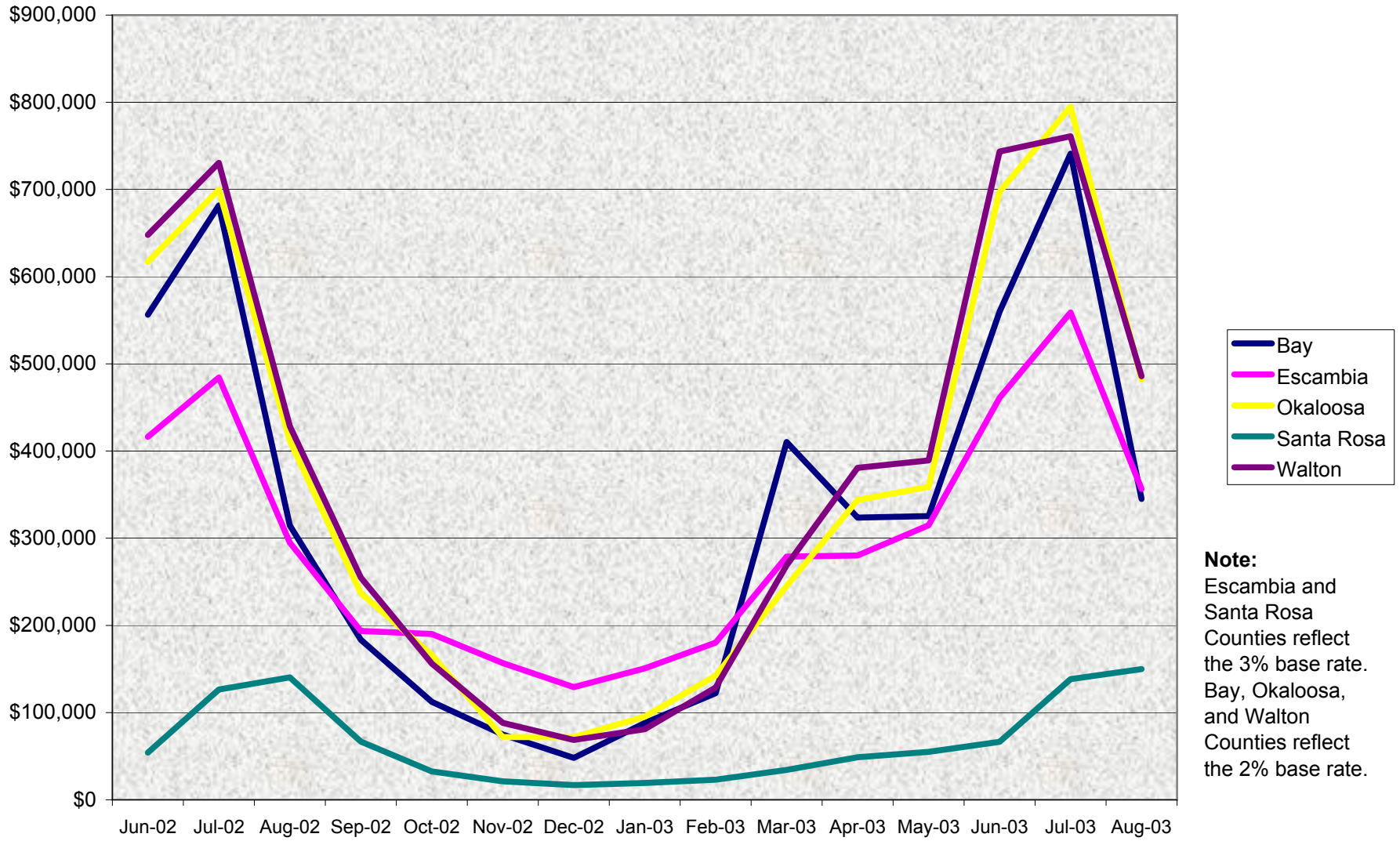
Data Source:

Bed Tax Collectors

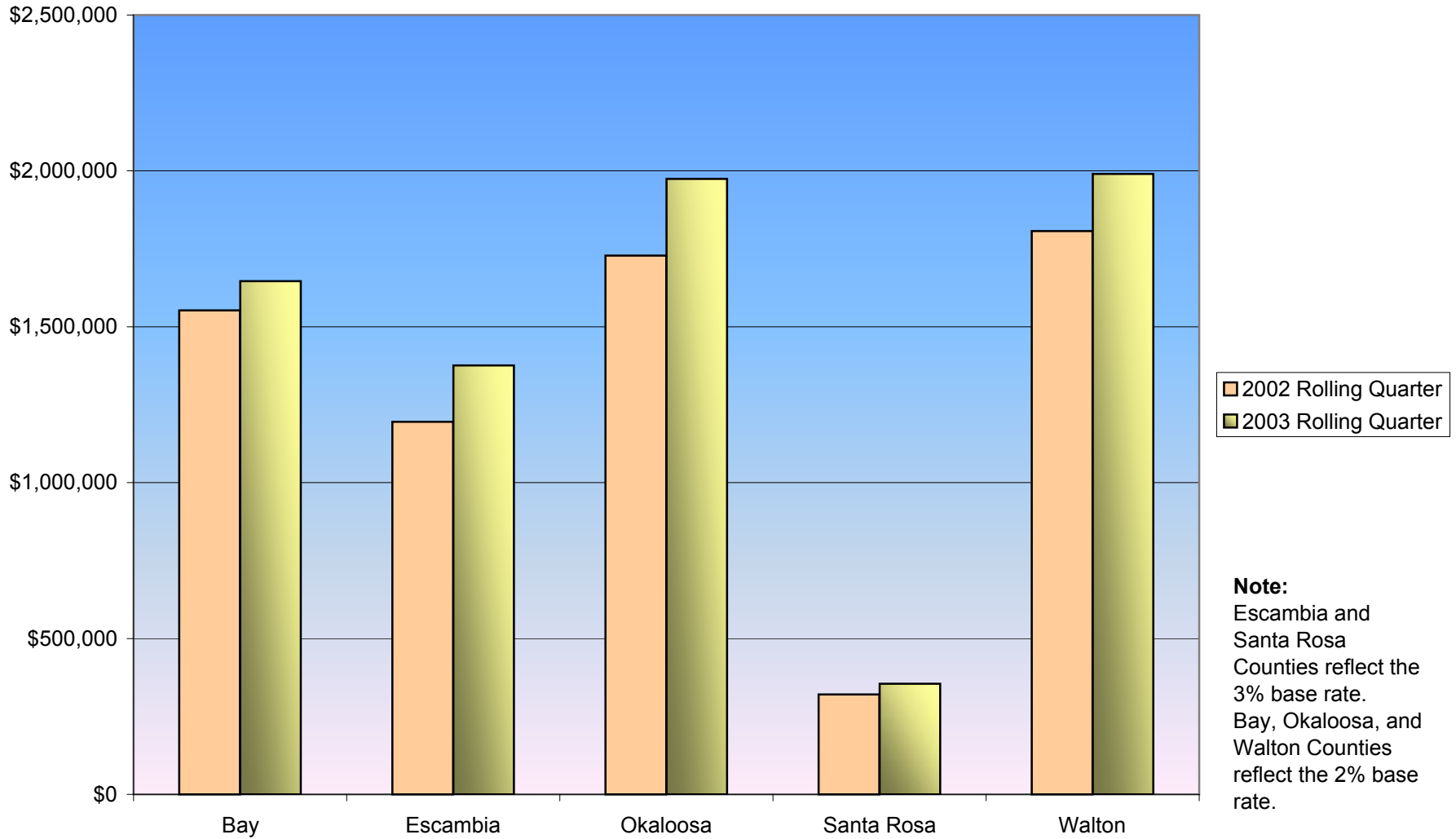
Note:

Escambia and Santa Rosa Counties reflect the 3% base rate.
Bay, Okaloosa, and Walton Counties reflect the 2% base rate.

Northwest Florida Bed Tax Chart



Rolling Quarter Comparison Months of June-July-August



**Rolling Quarter Percent Change
Months of June-July-August**

