

Northwest Florida Bed Taxes

	Bay	Escambia	Okaloosa	Santa Rosa	Walton	Northwest Florida
Sep-03	184,259	224,446	260,416	79,534	288,150	1,036,805
Oct-03	147,749	211,517	190,927	36,059	193,025	779,277
Nov-03	82,112	182,428	86,774	29,085	102,602	483,001
Dec-03	59,602	143,891	76,190	21,726	73,987	375,395
Jan-04	95,119	142,928	119,540	21,766	107,241	486,593
Feb-04	133,009	221,737	158,673	24,581	130,704	668,704
Mar-04	382,604	313,139	278,656	41,911	308,135	1,324,445
Apr-04	342,921	338,856	360,961	47,910	412,265	1,502,914
May-04	325,013	346,125	399,344	59,118	408,870	1,538,470
Jun-04	538,217	502,598	679,216	78,799	830,736	2,629,567
Jul-04	769,811	684,447	874,350	139,622	914,381	3,382,611
Aug-04	295,940	271,669	365,269	18,980	465,572	1,417,430
Sep-04	155,896	248,504	210,170	233,325	220,780	1,106,909
Oct-04	168,293	232,619	201,106	48,776	198,208	849,002
Nov-04	94,984	214,278	115,537	36,697	129,283	590,779

	Bay	Escambia	Okaloosa	Santa Rosa	Walton	Northwest Florida
Percent Change Nov-03 to Nov-04	15.68%	17.46%	33.15%	26.17%	26.00%	22.31%

	Bay	Escambia	Okaloosa	Santa Rosa	Walton	Northwest Florida
2003 Rolling Quarter	\$414,120	\$618,391	\$538,117	\$144,677	\$583,777	\$2,299,083
2004 Rolling Quarter	\$419,173	\$695,401	\$526,813	\$318,798	\$548,271	\$2,546,690

	Bay	Escambia	Okaloosa	Santa Rosa	Walton	Northwest Florida
Percent Change Rolling Quarter	1.22%	12.45%	-2.10%	120.35%	-6.08%	10.77%

Note: Rolling Quarter is the sum of the current month and the last two months

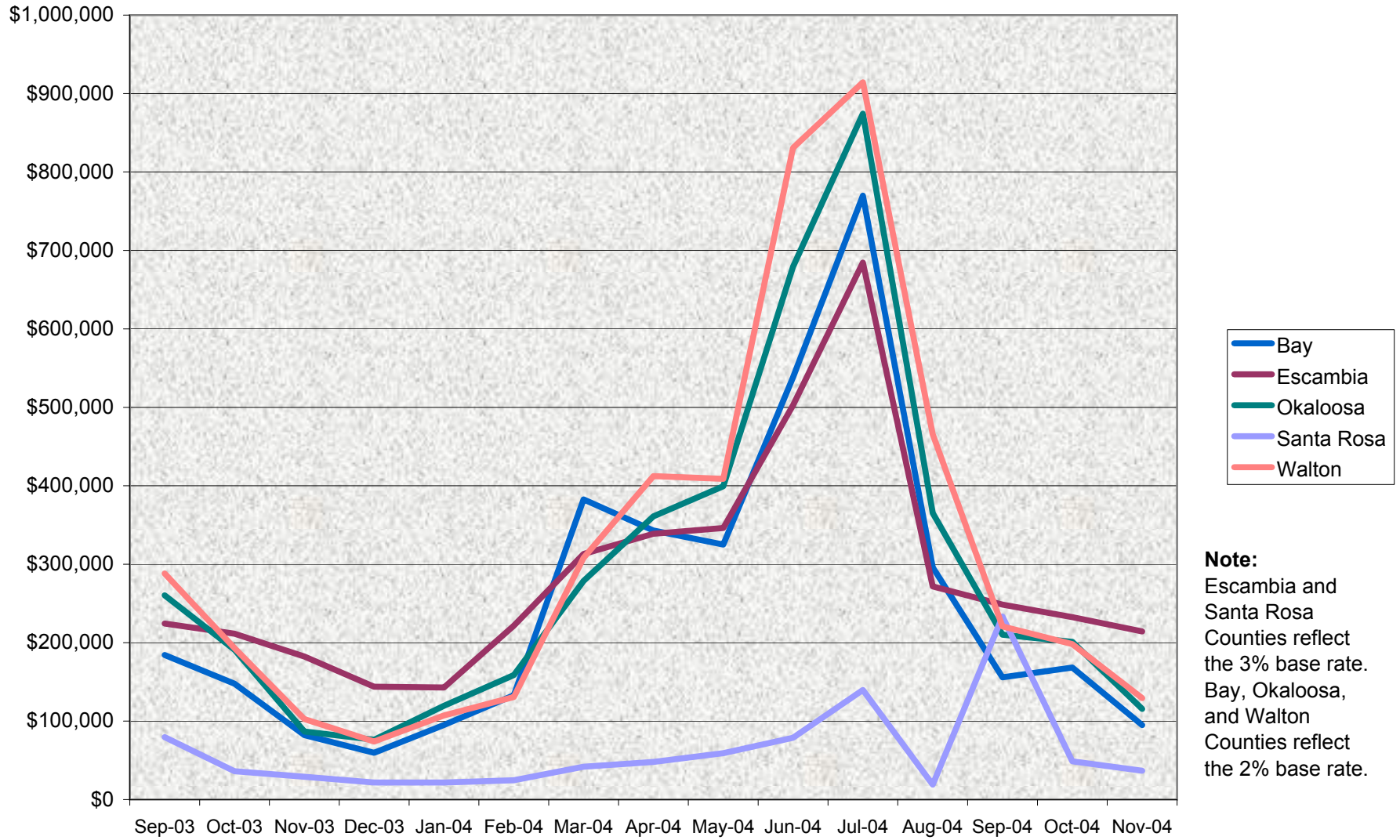
Data Source:

Bed Tax Collectors

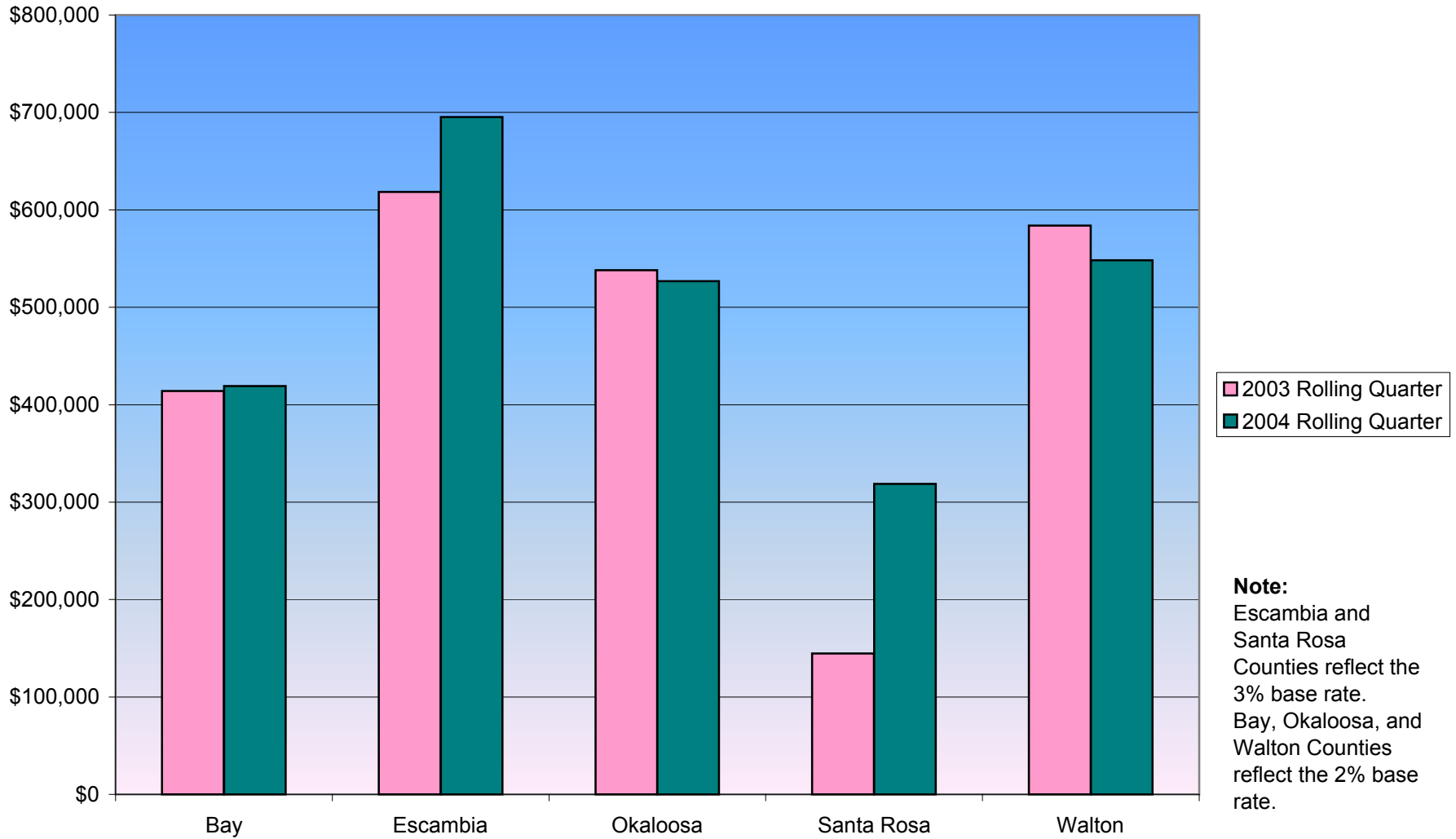
Note:

Escambia and Santa Rosa Counties reflect the 3% base rate.
Bay, Okaloosa, and Walton Counties reflect the 2% base rate.

Northwest Florida Bed Tax Chart



Rolling Quarter Comparison Months of September-October-November



**Rolling Quarter Percent Change
Months of September-October-November**

