

Northwest Florida Bed Taxes

	Bay	Escambia	Okaloosa	Santa Rosa	Walton	Northwest Florida
Sep-02	183,532	193,564	237,072	66,755	254,949	935,871
Oct-02	112,384	190,161	166,123	32,516	156,161	657,345
Nov-02	74,734	156,742	71,872	21,077	88,185	412,610
Dec-02	48,033	129,124	71,766	16,862	68,616	334,401
Jan-03	88,001	150,788	95,404	19,230	80,944	434,368
Feb-03	122,200	180,228	142,235	22,950	128,733	596,346
Mar-03	410,435	278,843	245,121	34,225	268,939	1,237,563
Apr-03	323,644	280,195	343,802	48,728	380,718	1,377,087
May-03	325,420	314,877	358,844	54,911	389,168	1,443,220
Jun-03	559,817	461,018	697,263	66,390	743,435	2,527,923
Jul-03	741,028	558,939	794,859	138,378	761,059	2,994,263
Aug-03	345,114	356,367	482,138	149,830	485,713	1,819,163
Sep-03	184,259	224,446	260,416	79,534	288,150	1,036,805
Oct-03	147,749	211,517	190,927	36,059	193,025	779,277
Nov-03	82,112	182,428	86,774	29,085	153,904	534,302

	Bay	Escambia	Okaloosa	Santa Rosa	Walton	Northwest Florida
Percent Change Nov-02 to Nov-03	9.87%	16.39%	20.73%	37.99%	74.52%	29.49%

	Bay	Escambia	Okaloosa	Santa Rosa	Walton	Northwest Florida
2002 Rolling Quarter	\$370,650	\$540,467	\$475,066	\$120,348	\$499,295	\$2,005,826
2003 Rolling Quarter	\$414,120	\$618,391	\$538,117	\$144,677	\$635,078	\$2,350,384

	Bay	Escambia	Okaloosa	Santa Rosa	Walton	Northwest Florida
Percent Change Rolling Quarter	11.73%	14.42%	13.27%	20.22%	27.19%	17.18%

Note: Rolling Quarter is the sum of the current month and the last two months

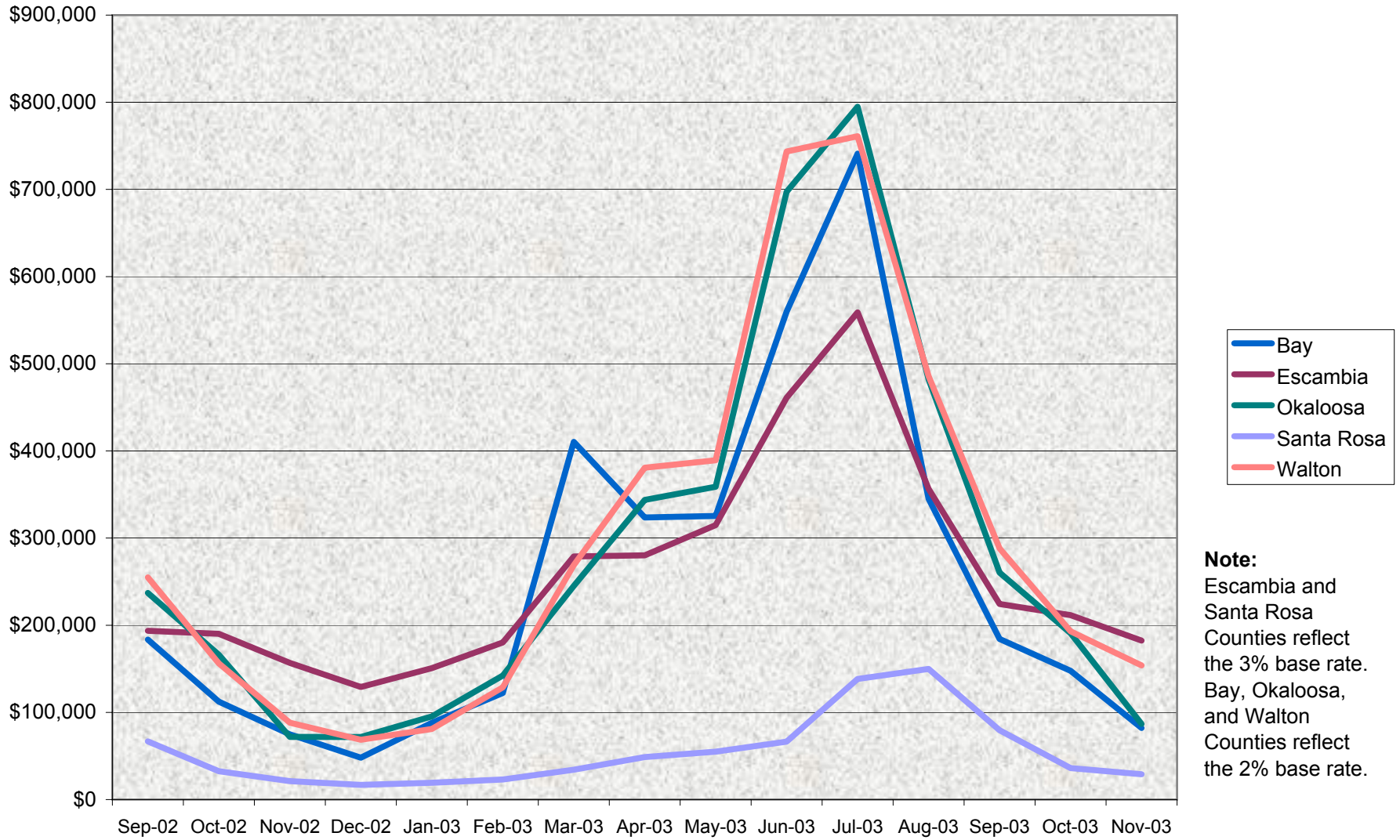
Data Source:

Bed Tax Collectors

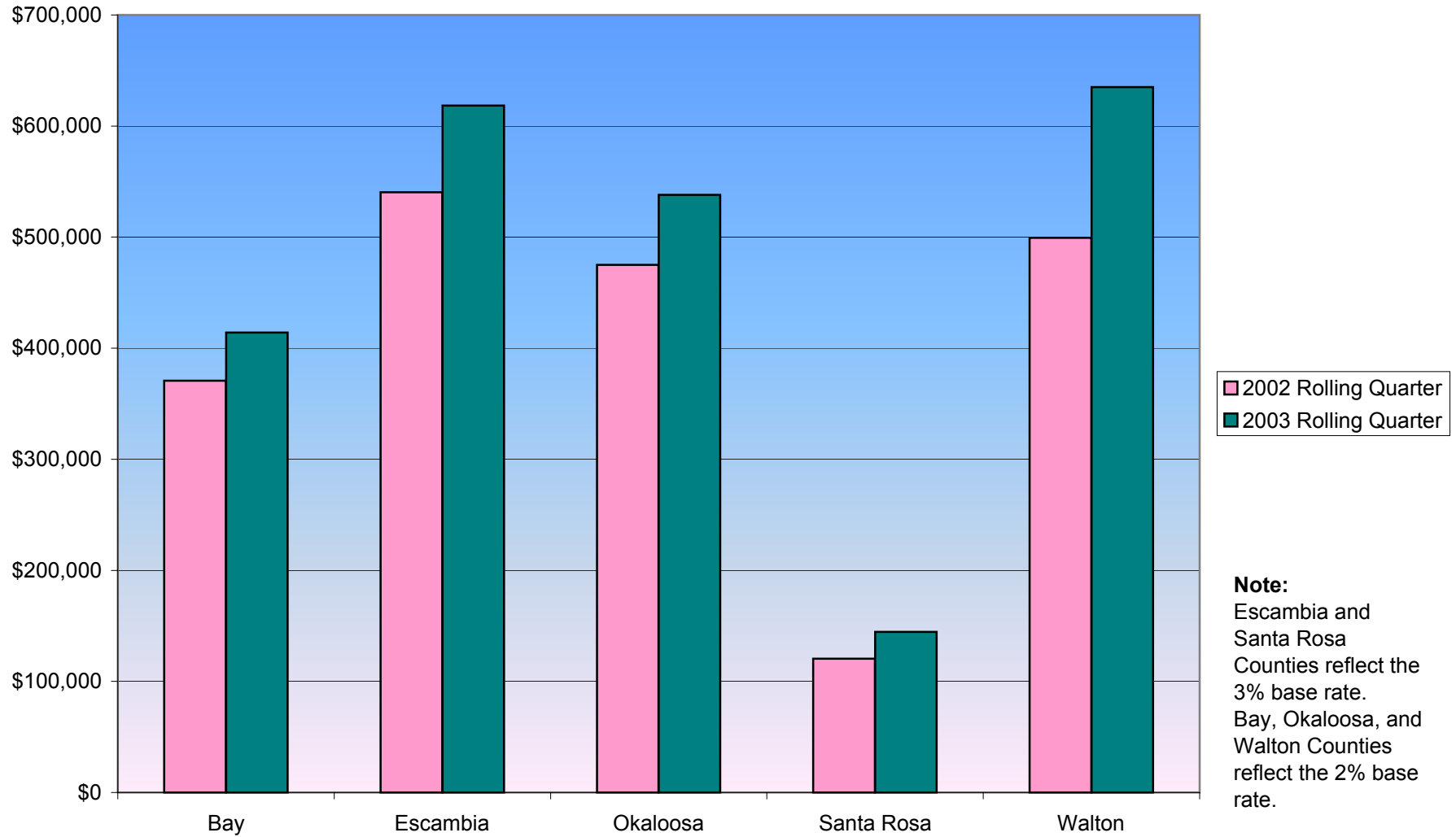
Note:

Escambia and Santa Rosa Counties reflect the 3% base rate.
Bay, Okaloosa, and Walton Counties reflect the 2% base rate.

Northwest Florida Bed Tax Chart



Rolling Quarter Comparison Months of September-October-November



**Rolling Quarter Percent Change
Months of September-October-November**

