

Northwest Florida Bed Taxes

	Bay	Escambia	Okaloosa	Santa Rosa	Walton	Northwest Florida
Apr-03	323,644	280,195	343,802	48,728	380,718	1,377,087
May-03	325,420	314,877	358,844	54,911	389,168	1,443,220
Jun-03	559,817	461,018	697,263	66,390	743,435	2,527,923
Jul-03	741,028	558,939	794,859	138,378	761,059	2,994,263
Aug-03	345,114	356,367	482,138	149,830	485,713	1,819,163
Sep-03	184,259	224,446	260,416	79,534	288,150	1,036,805
Oct-03	147,749	211,517	190,927	36,059	193,025	779,277
Nov-03	82,112	182,428	86,774	29,085	102,602	483,001
Dec-03	59,602	143,891	76,190	21,726	73,987	375,395
Jan-04	95,119	142,928	119,540	21,766	107,241	486,593
Feb-04	133,009	221,737	158,673	24,581	130,704	668,704
Mar-04	382,604	313,139	278,656	41,911	308,135	1,324,445
Apr-04	342,921	338,856	360,961	47,910	412,265	1,502,914
May-04	325,013	346,125	399,344	59,118	408,870	1,538,470
Jun-04	538,217	502,598	679,216	78,799	830,736	2,629,567

	Bay	Escambia	Okaloosa	Santa Rosa	Walton	Northwest Florida
Percent Change June-03 to June-04	-3.86%	9.02%	-2.59%	18.69%	11.74%	4.02%

	Bay	Escambia	Okaloosa	Santa Rosa	Walton	Northwest Florida
2003 Rolling Quarter	\$1,208,881	\$1,056,090	\$1,399,908	\$170,029	\$1,513,321	\$5,348,229
2004 Rolling Quarter	\$1,206,152	\$1,187,579	\$1,439,521	\$185,827	\$1,651,872	\$5,670,951

	Bay	Escambia	Okaloosa	Santa Rosa	Walton	Northwest Florida
Percent Change Rolling Quarter	-0.23%	12.45%	2.83%	9.29%	9.16%	6.03%

Note: Rolling Quarter is the sum of the current month and the last two months

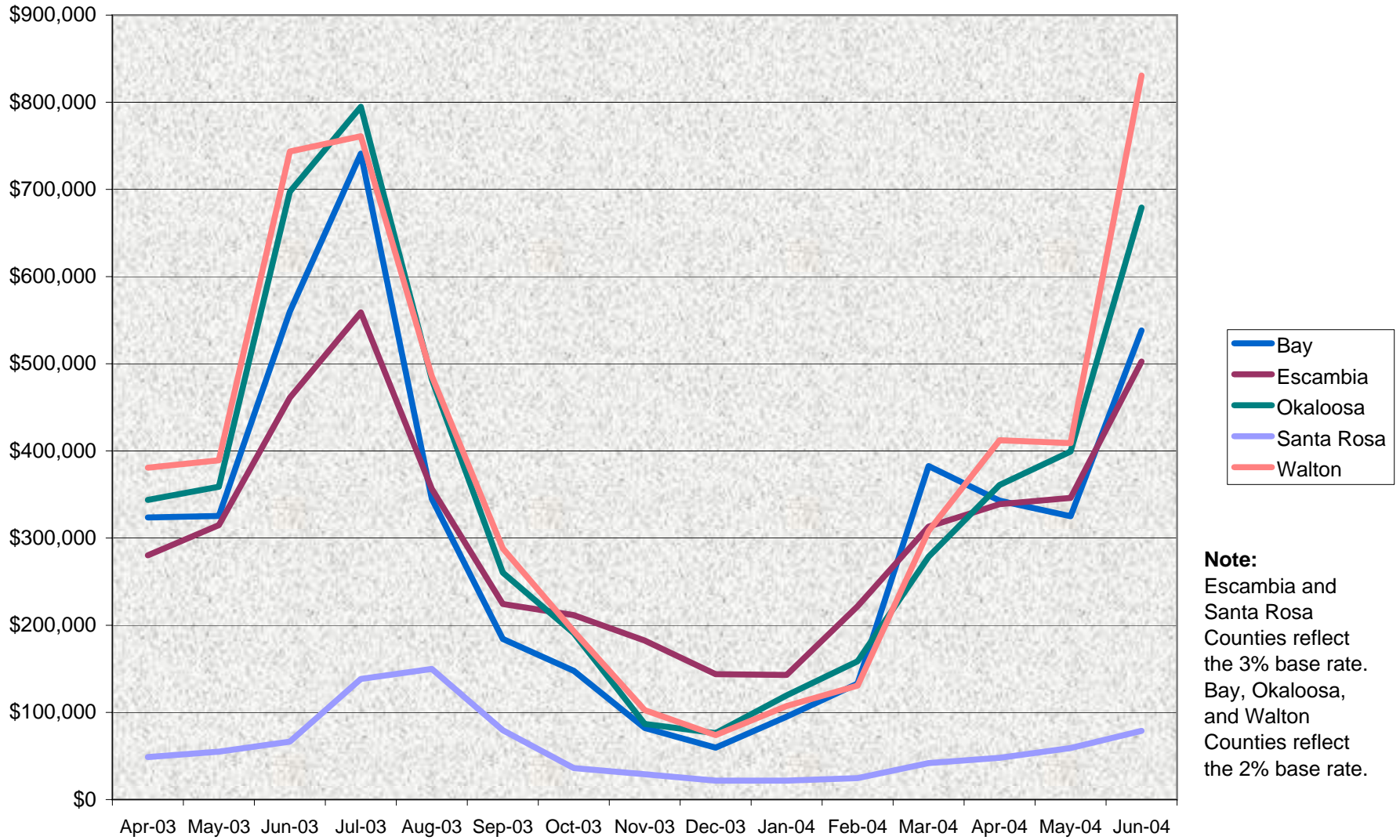
Data Source:

Bed Tax Collectors

Note:

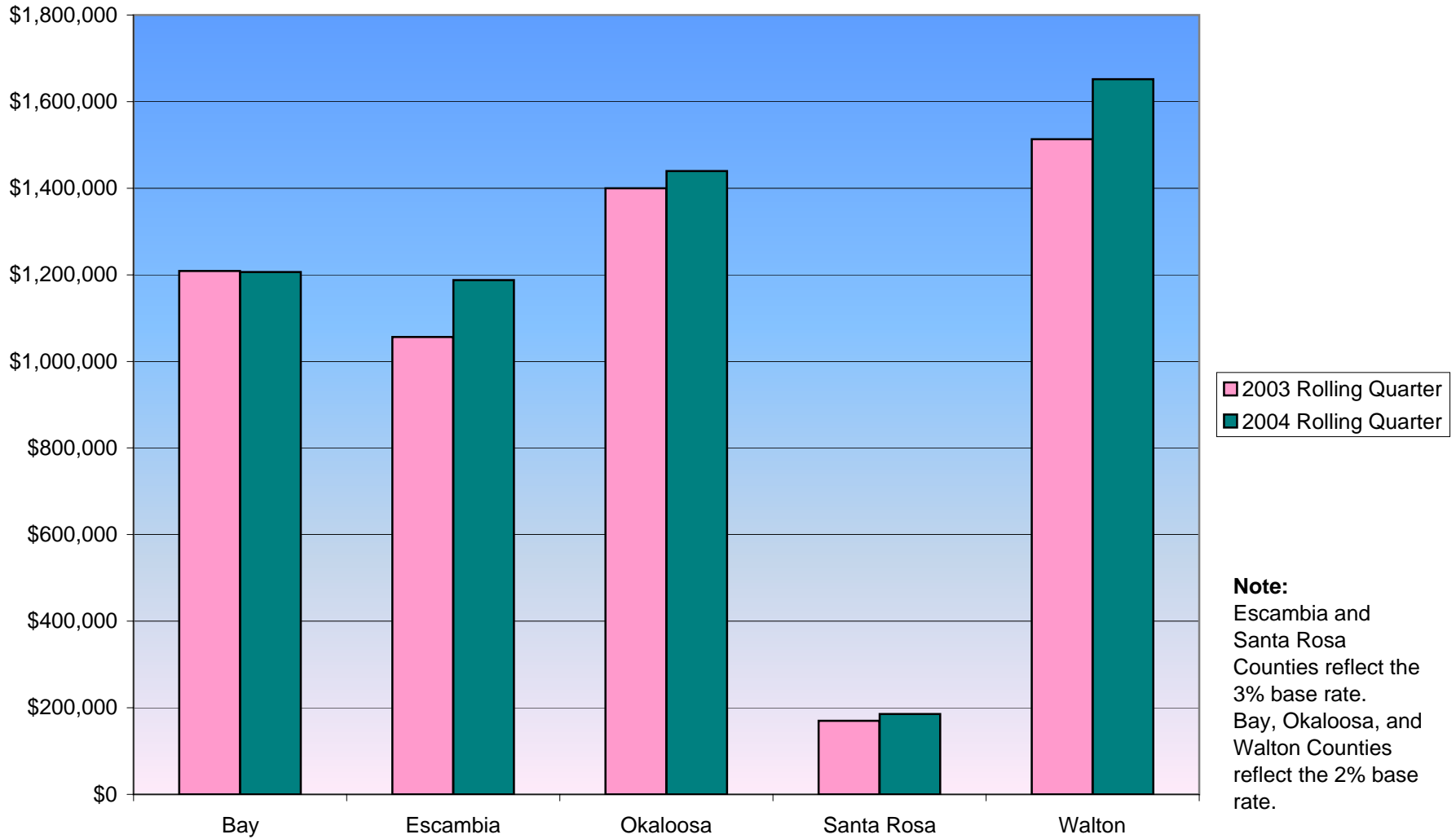
Escambia and Santa Rosa Counties reflect the 3% base rate.
Bay, Okaloosa, and Walton Counties reflect the 2% base rate.

Northwest Florida Bed Tax Chart



Note:
 Escambia and Santa Rosa Counties reflect the 3% base rate. Bay, Okaloosa, and Walton Counties reflect the 2% base rate.

Rolling Quarter Comparison Months of April-May-June



**Rolling Quarter Percent Change
Months of April-May-June**

