

Northwest Florida Bed Taxes

	Bay	Escambia	Okaloosa	Santa Rosa	Walton	Northwest Florida
Jul-05	1,038,707	334,319	836,364	55,037	1,105,562	3,369,989
Aug-05	452,513	314,529	560,304	57,794	672,738	2,057,878
Sep-05	315,673	302,728	326,985	38,146	404,431	1,387,963
Oct-05	250,606	262,261	279,954	27,650	273,265	1,093,736
Nov-05	156,231	229,491	146,102	24,629	199,451	755,904
Dec-05	142,169	198,766	160,745	23,160	153,512	678,352
Jan-06	186,921	205,121	202,206	23,353	193,907	811,508
Feb-06	229,348	225,806	255,378	27,543	238,008	976,083
Mar-06	563,256	312,491	422,262	39,521	540,936	1,878,466
Apr-06	494,115	288,754	537,005	38,865	653,883	2,012,622
May-06	574,267	343,616	655,986	44,642	726,384	2,344,895
Jun-06	960,578	426,840	1,140,192	74,262	1,464,741	4,066,613
Jul-06	1,270,996	544,447	1,216,236	98,216	1,430,188	4,560,083
Aug-06	448,778	321,341	616,052	50,260	724,953	2,161,384
Sep-06	366,054	245,125	404,027	38,045	518,890	1,572,141

	Bay	Escambia	Okaloosa	Santa Rosa	Walton	Northwest Florida
Percent Change Sept-05 to Sept-06	15.96%	-19.03%	23.56%	-0.26%	28.30%	13.27%

	Bay	Escambia	Okaloosa	Santa Rosa	Walton	Northwest Florida
2005 Rolling Quarter	\$1,806,893	\$951,576	\$1,723,653	\$150,977	\$2,182,731	\$6,815,830
2006 Rolling Quarter	\$2,085,828	\$1,110,913	\$2,236,315	\$186,521	\$2,674,031	\$8,293,608

	Bay	Escambia	Okaloosa	Santa Rosa	Walton	Northwest Florida
Percent Change Rolling Quarter	15.44%	16.74%	29.74%	23.54%	22.51%	21.68%

Note: Rolling Quarter is the sum of the current month and the last two months

Data Source:

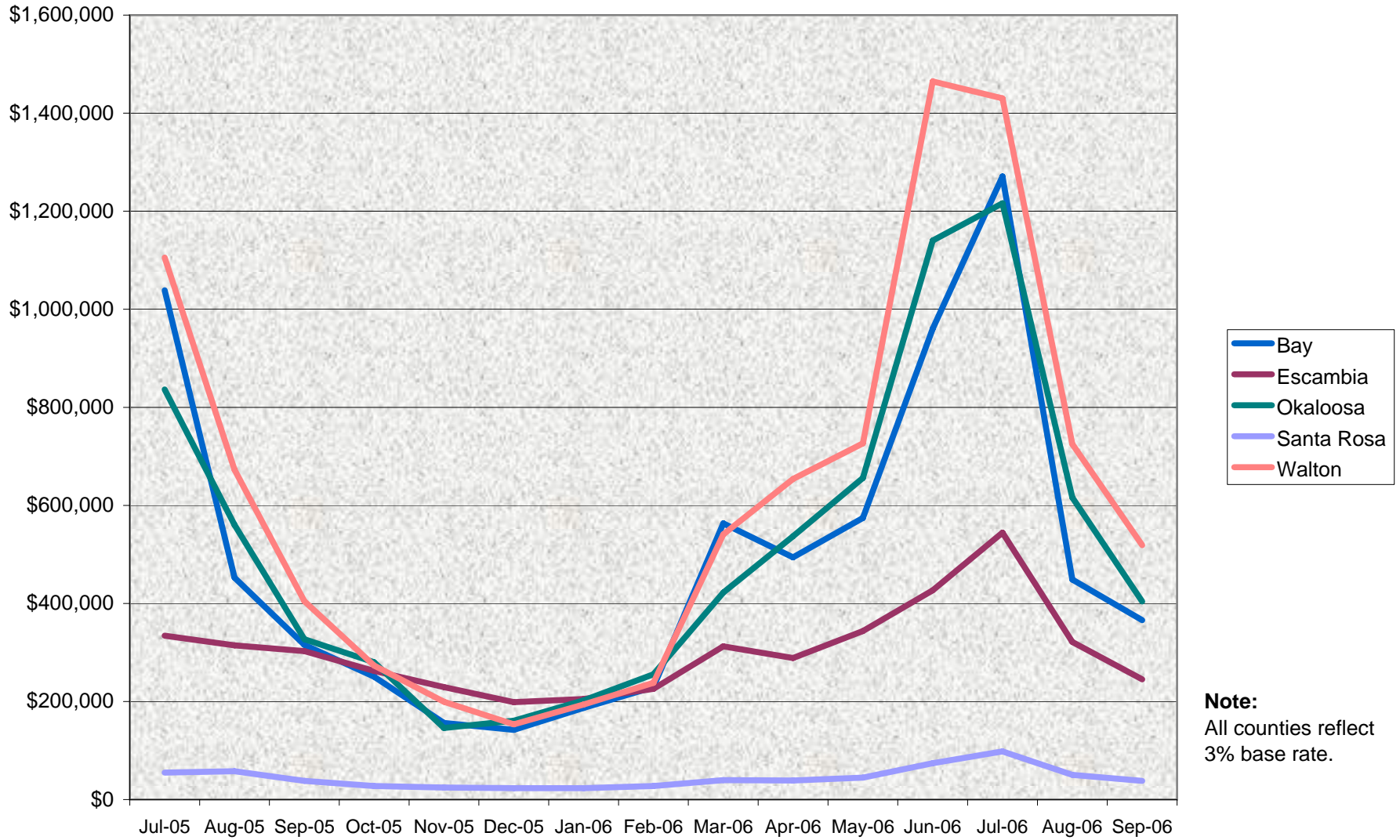
Bed Tax Collectors

Note:

All collections converted to 3% level for analysis

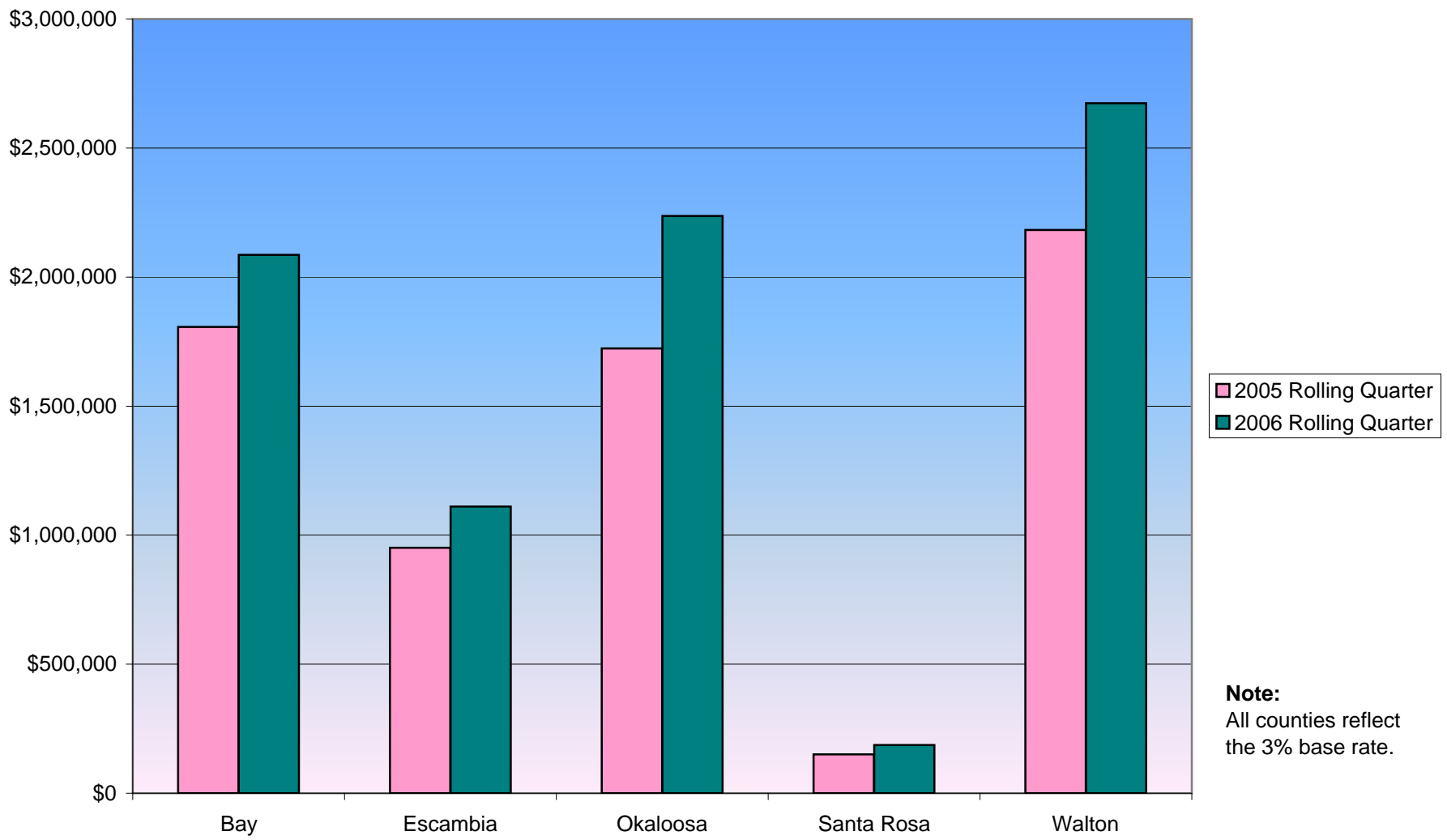
After consultation with Bay County Clerk of Court regarding Bay County's bed tax collections, the Haas Center revised the data series beginning August 2005 until the present.

Northwest Florida Bed Tax Chart



Note:
All counties reflect
3% base rate.

**Rolling Quarter Comparison
Months of July-August-September**



**Rolling Quarter Percent Change
Months of July-August-September**

